

Data Station Plus™

Protocol Converter, Data Logger,
and Web Interface

Monitor & control anywhere with virtual HMI

Access data logs worldwide

Manage multi-vendor systems

Reduce integration costs



- Converts over 200 protocols
- Communicates with more than 13 device types simultaneously
- Built-in web & FTP server provides remote monitoring, control & data management
- On-board data logging
- Multiple serial, Ethernet & USB ports
- Optional CANopen, DeviceNet, Profibus DP & GSM/GPRS expansion cards
- DIN-rail mounted
- Software and support included

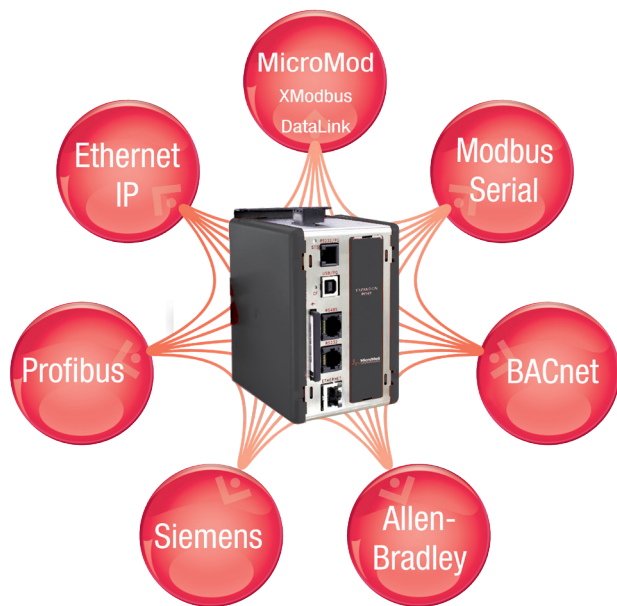
The Data Station Plus™ is designed to act as an economic hub for industrial data collection and management. The unit offers multiple protocol conversion, data logging and remote machine access. With three built in serial ports and a 10 Base-T/100 Base-TX Ethernet port, the unit allows disparate devices to communicate seamlessly with one another. The Ethernet port supports up to four protocols simultaneously so even Ethernet to Ethernet protocols can be converted.

The built-in web server allows log files to be retrieved manually, and also provides access to the unique “virtual HMI”. Any standard web browser can be used to monitor or control the HMI from a PC anywhere in the world.

Data Station Plus™ comes already loaded with over 200 drivers, including MicroMod’s Extended Modbus® protocol for MOD 30ML, MODCELL, SteamPAK & RetroPAK, and DataLink protocol for WaterPAK and Micro-DCI controllers including 53MC5000, 53SL6000 MicroMite, and legacy products.

Convert & Communicate

- Convert over 200 major industrial protocols
- Drag-and-drop data mapping between protocols
- Simultaneous communication with a minimum of 13 different protocols (expandable)
- One RS-422/485 port and two RS-232 ports standard
- Dual Ethernet port provides communications separately to the factory floor and enterprise

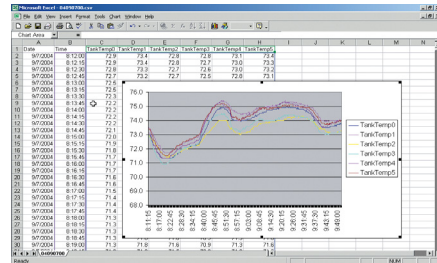


Connect

- Virtual HMI provides built-in PC-based SCADA functionality
- Web and network-enable any connected device
- Securely monitor, access or control all system functions
- Auto-upload data to FTP, web pages, dashboards
- Upload/download databases, recipes or log files
- Email or text message alarm and event notifications
- Pass through programming to other devices

Collect

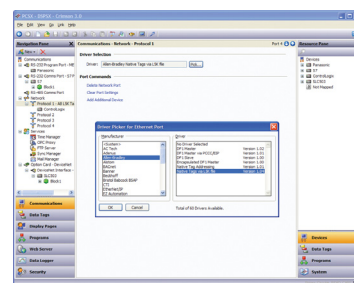
- Acquire & log data from any or all connected devices into a single file
- Data stored in open CSV Excel compatible file format



- Email or FTP logged files
- Log tags at user-programmable rates with automatic time/date stamp
- Download, upload and remotely access recipes, data and configuration files from the CF card or a USB drive; load database/configuration updates without a PC
- Automatically synchronize logged data between the Data Station Plus and remote FTP site
- Create customized data screens accessible by password to privately provide selected data for users

Configure

- Software, support, drivers & updates *included at no extra charge*
- Multi-lingual capability with support for thousands of characters
- Complete library of over 5,000 industrial graphics
- Built-in emulator for testing
- Full-featured C-type syntax programming



Modbus® is a registered trademark of Schneider Electric licensed to the Modbus Organization, Inc.