

# Graphite

## Advanced HMI Panels

*Increase productivity*

*Improve operations*

*Reduce engineering time*

*Enhance data management*



- Touchscreen operator interface panels from 7" to 15"
- Convert up to 20 protocols simultaneously from over 300 supported drivers
- Wide -20° to 60°C operating temperature range
- Sunlight readable, outdoor-rated models
- Built-in data logging (SD card), web server, and FTP for remote access
- Send email and/or SMS notifications on alarm conditions
- UL, cUL, UL hazardous, ATEX, IECEx and ABS approvals

Rugged Graphite operator interface panels give you complete HMI functionality for MicroMod controllers, PLCs, motor drives and other communications-capable devices. With Ethernet as standard on all models, you can network-enable any serial devices connected to the panel.

All of the Graphite HMI models offer drag-and-drop protocol conversion, data logging and web-based monitoring and control. With UL Class 1, Division 2, ABS, ATEX and IECEx approvals, Graphite HMIs enable customers to connect, monitor and control processes in harsh environments.

Available in eight different sizes ranging from 7 inch to 15 inch, Graphite HMIs feature sleek, full-color touchscreens in a streamlined, compact footprint for easy installation. Rugged cast-aluminum construction supports outdoor and indoor display with wide operating temperatures and high shock/vibration tolerances that enable organizations to connect, monitor and control processes regardless of environment. Unify disparate devices by converting up to 20 industrial protocols simultaneously from a built-in library of over 300 supported drivers, including MicroMod's Extended Modbus protocol for MOD 30ML, MODCELL, SteamPAK & RetroPAK, and DataLink protocol for WaterPAK and Micro-DCI controllers.

## Sleek, Rugged Construction

Graphite HMIs feature reliable, resistive analog touchscreens and a rugged aluminum housing that allow operation in high shock, vibration and temperature applications. Standard and widescreen models are available in sizes ranging from 7 inch to 15 inch. The 7 inch and 10 inch models are available with UV-resistant, sunlight-visible displays for outdoor use.

## Convert & Communicate

Communicating with over 300 different protocols, Graphite HMIs offer a powerful HMI communication platform. Use Graphite devices to manage multiple-vendor applications and network-enable existing equipment. Graphite HMIs come standard with one 10/100Base-T(X) Ethernet port, two RS-232 and one RS-422/485 serial ports, one USB Device and two USB Host ports and support serial to Ethernet conversion. Additional Ethernet and/or RS-422/485 ports are available on specific models.

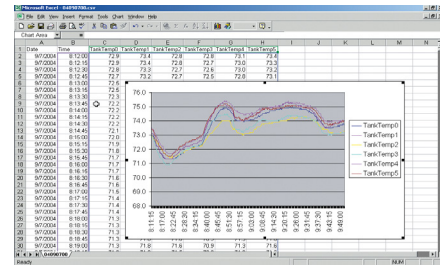


## Connect

Graphite HMIs excel at keeping personnel informed of machine and process performance. With its built-in web server, remote personnel can monitor as well as control equipment from virtually any networked device. Graphite HMIs can also alert personnel about existing or pending issues via email or SMS text messages to ensure problems are addressed quickly in order to minimize downtime.

## Collect

With the built-in data logger, Graphite HMIs offer a powerful means for recording continuous data as well as events and alarms. Data can be acquired from any connected devices and compiled into CSV-formatted files, where it can be stored, displayed, emailed or automatically synchronized with an FTP or Microsoft SQL server.



## Configure

The powerful Crimson® software is a remarkable programming platform that unlocks the power of the Graphite HMIs with simple drag-and-drop, point-and-click configuration. Unlike competitive HMIs that charge you extra for cumbersome software, Crimson software is included with each Graphite HMI.



Modbus® is a registered trademark of Schneider Electric licensed to the Modbus Organization, Inc.